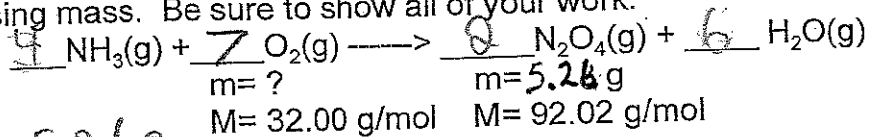


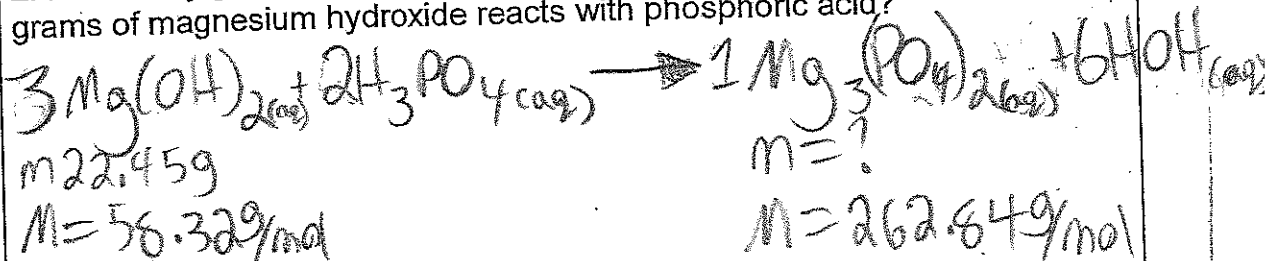
1. Using the following unbalanced equation and information below it, find the missing mass. Be sure to show all of your work.



5 / 5

$$\frac{5.26 \text{ g}}{92.02 \text{ g/mol}} = 0.057 \text{ mol} \times \frac{7 \text{ O}_2}{2 \text{ N}_2\text{O}_4} = 0.2 \text{ mol} = \boxed{6.40 \text{ g}} \text{ of O}_2$$

2. How many grams of magnesium phosphate will be produced when 22.45 grams of magnesium hydroxide reacts with phosphoric acid?



10 / 10

$$\frac{22.45 \text{ g}}{58.32 \text{ g/mol}} = 0.3849 \text{ mol} \times \frac{1}{3} = 0.1283 \text{ mol} = \boxed{33.72 \text{ g}} \text{ of Mg}_3(\text{PO}_4)_2$$

262.84 g/mol